

# Nith District Salmon Fishery Board

Nith Fishery Management Works  
1980s - Current

# 1980s Abolition of sporting rates

Poaching problems











# 1991 Report and review of the juvenile salmonid populations within the Nith Catchment

1991

Chairman Peter Kennedy

# Actions From 1991 report

Hatchery production

Habitat survey/enhancement

Barrier survey/removal

Farm pollution reported

Liaison with mining industry

Continue to suppress poaching

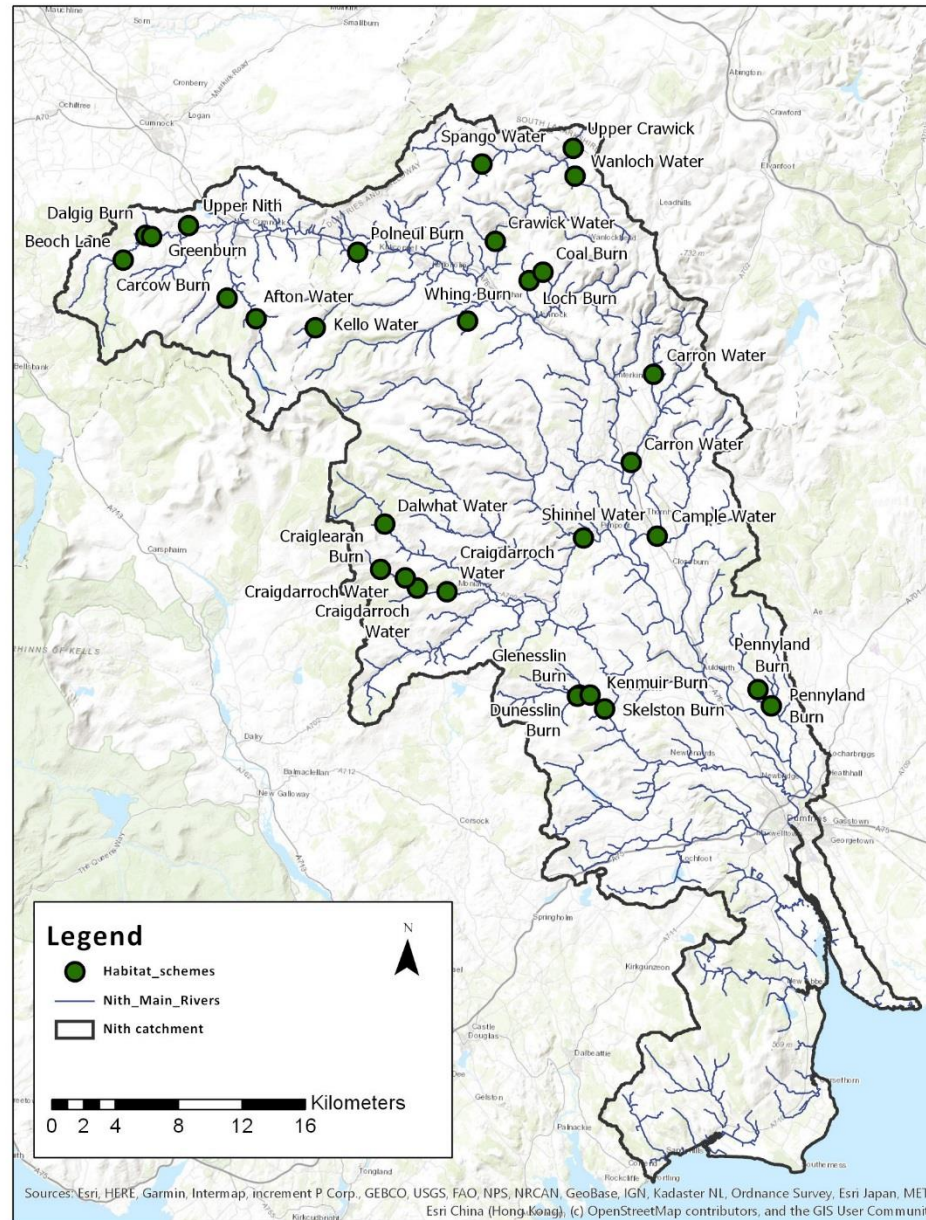
Predator control



# Nith Habitat Enhancement Committee 1995

- To oversee survey work on Nith catchment
- To agree a plan of action
- To raise funds
- To liaise with proprietors/public
- To implement works
- To monitor fish populations

# River Nith Habitat Schemes

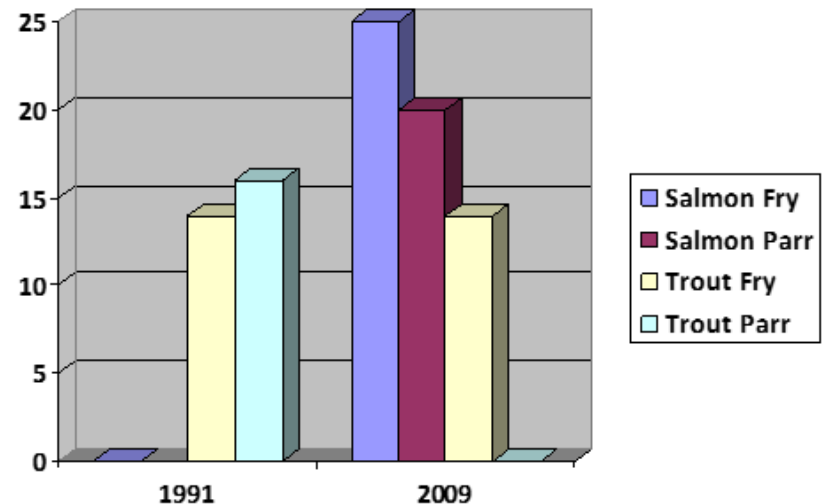


# Comparison

## Afton Water

### Comparison of salmonid densities between 1991 and 2009 electrofishing surveys

Site No.	1	2
River	Afton Water	Afton Water
Location	U/S from bottom Watergate	U/S from bottom Watergate
Grid ref NX	263200 608000	263200 608000
Survey Date	1991	2009
Density per 100 m <sup>2</sup> Salmon Fry	0	25
Density per 100 m <sup>2</sup> Salmon Parr	<1	20
Density per 100 m <sup>2</sup> Trout Fry	14	14
Density per 100 m <sup>2</sup> Trout Parr	16	0
Other species present	Eel	-





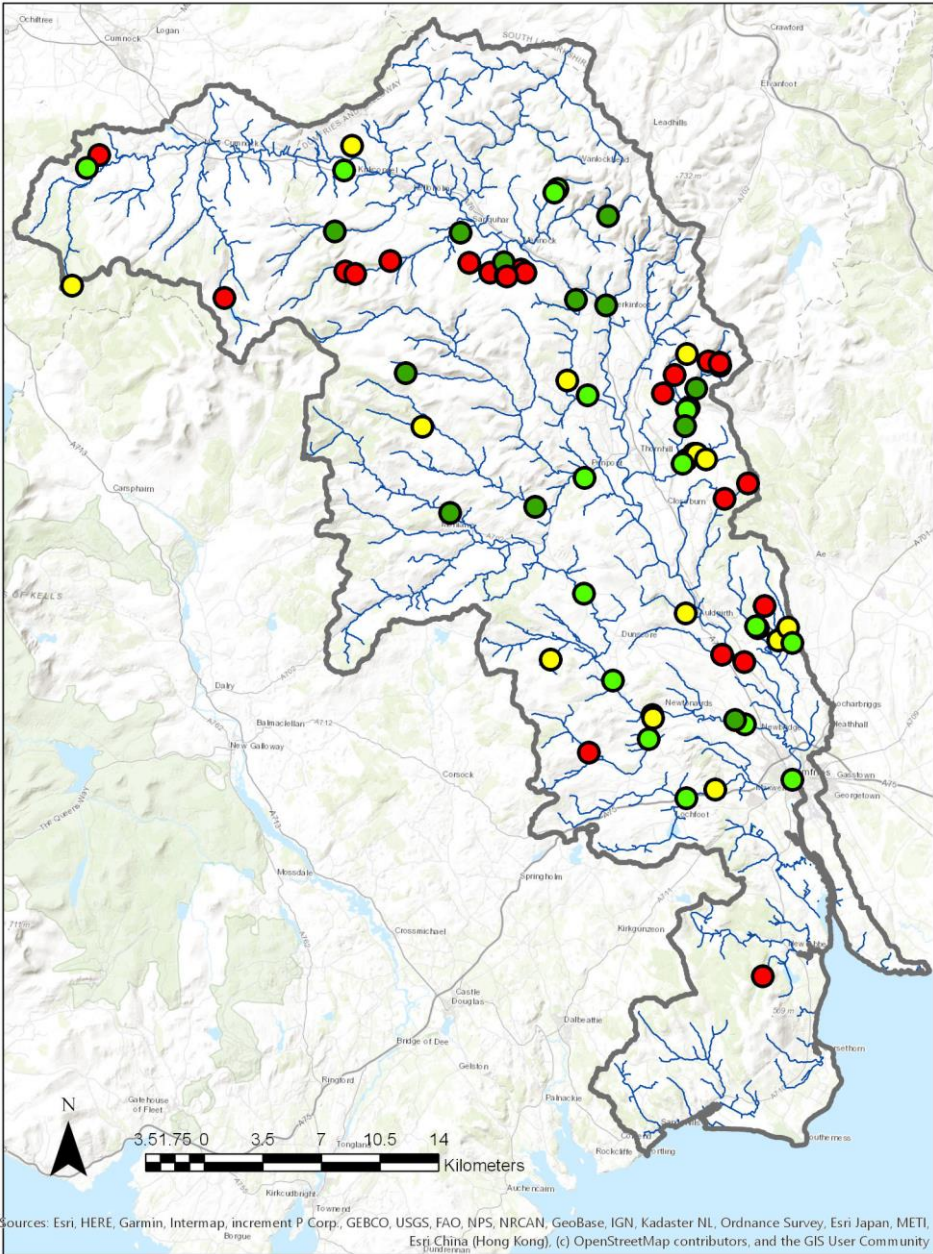






## River Nith

### All recorded barriers

























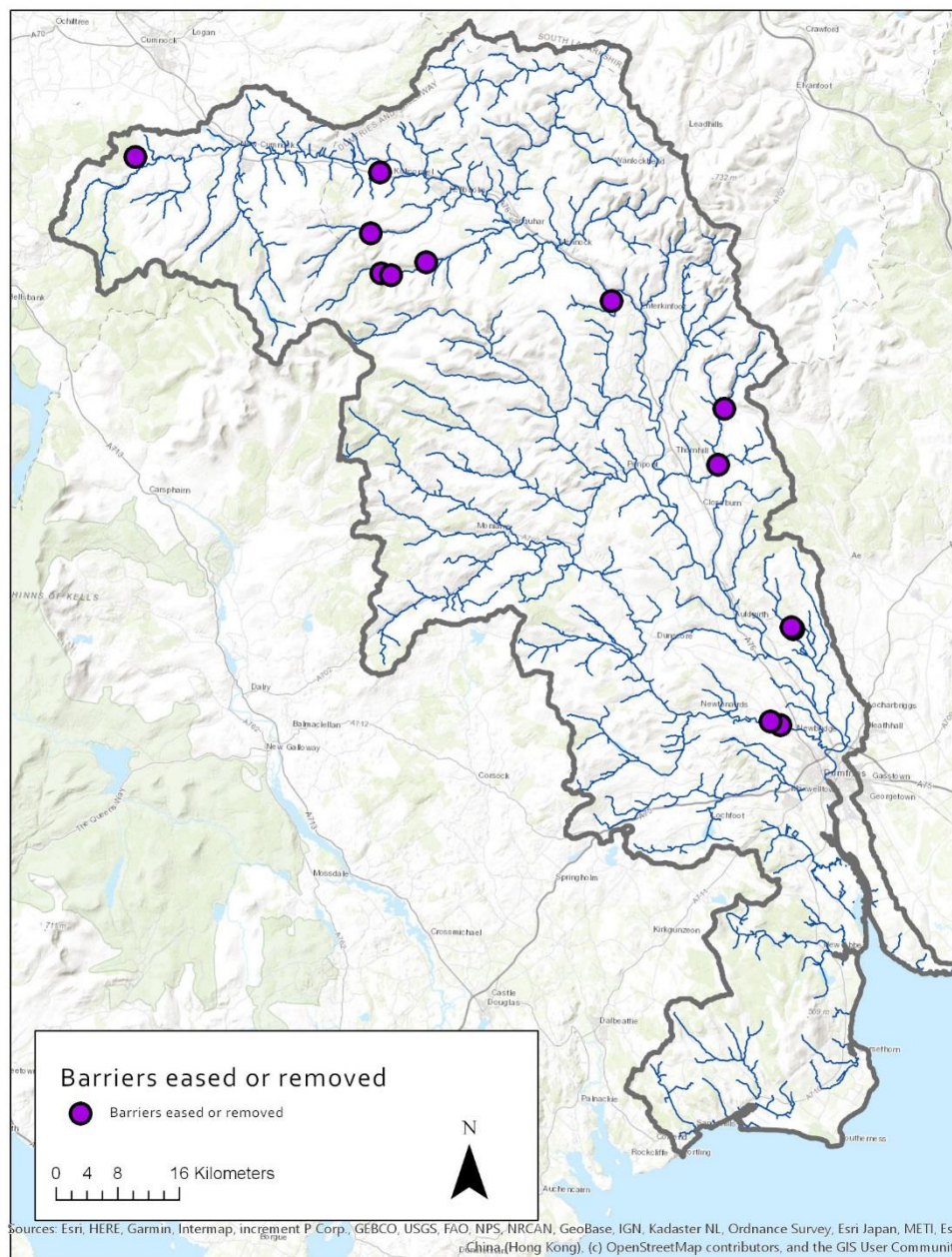






# River Nith

## Barriers removed or eased















# Development & Salmonids

Roads

Rail

Culverts/Bridges

Windfarms

Hydro

Gas/Water

Electricity Infrastructure



















# Restoration















# Research & Monitoring

Electrofishing

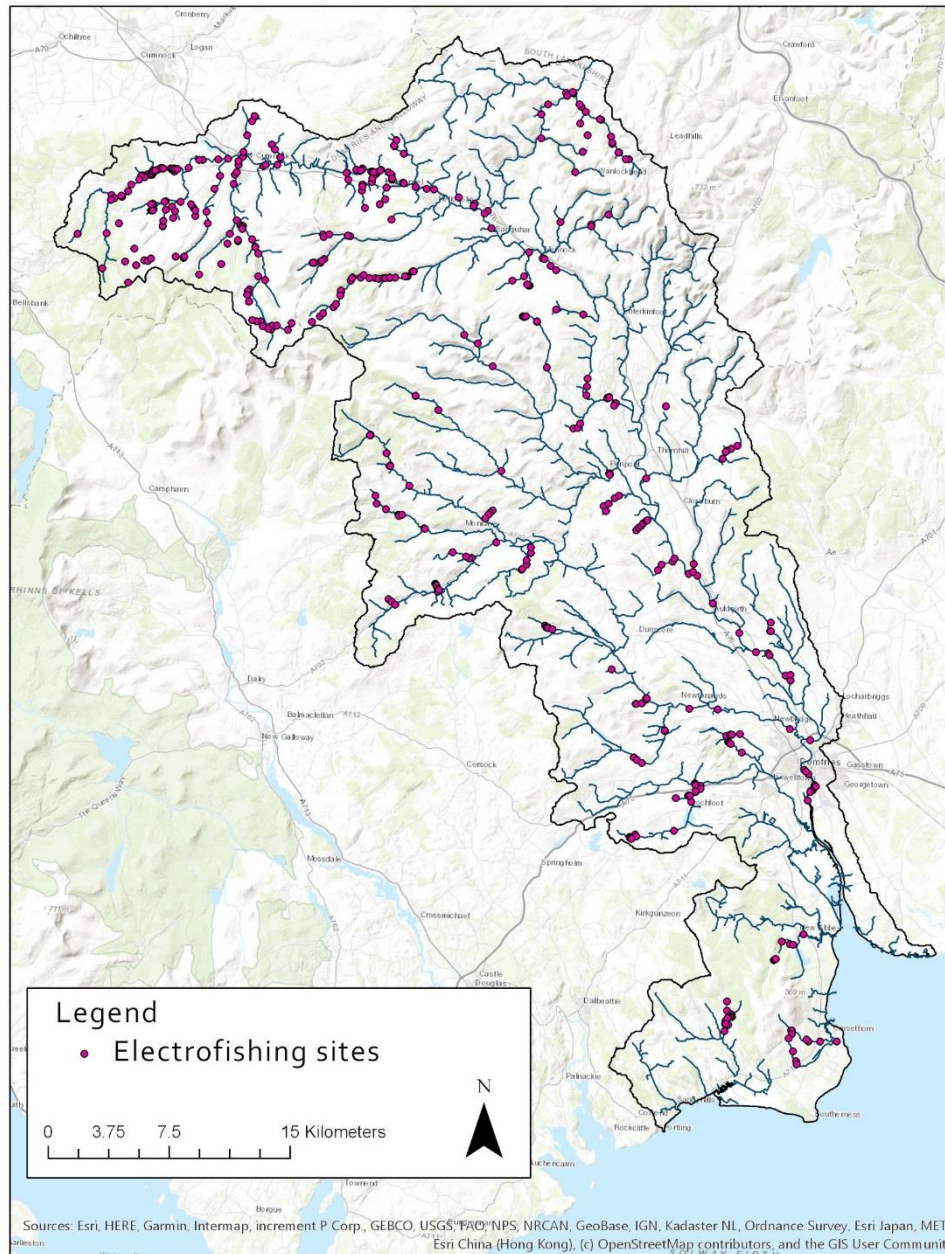
Invertebrates

Genetics



# River Nith

## All electrofishing sites



# Education











- Celtic Sea Trout Project £40,000
- Political lobbying
- Governance of operating
- Invasive species control
- Conservation legislation
- Financial management
- Planning applications two authorities
- Controlled activities applications SEPA
- Forest management plans

Statistics	
Electrofishing surveys	978 surveys completed
Length of habitat sites (km)	80.5km
Aquatic survey reports	<ul style="list-style-type: none"> <li>• Windfarm – 35 reports</li> <li>• Hydro – 39 reports</li> <li>• Mining – 63 reports</li> <li>• Other – 40 + reports</li> </ul>
Invasive species controlled <ul style="list-style-type: none"> <li>• Japanese knotweed</li> <li>• Giant hogweed</li> <li>• Skunk cabbage</li> <li>• Mink trapped</li> </ul>	39,740m <sup>2</sup> 63km of riverbank 4480m <sup>2</sup> 597 mink
Fry stocked	4.73 million salmon 1.26 million sea trout 18,000 brown trout
Education sessions	4,500 participants